

Serial #: WGR-CCL-TEL-01
Length: 1.81 m Max Diameter: 70.00 mm

0.00 m - CCL

0.87 m - Gamma Ray

WACORP K-WAT

Length: 6.24 m Max Diameter: 92.00 mm

1.61 m - Temperature

1.76 m - Pressure

4.75 m - Pump Pressure

5.25 m - Dielectric



WC Bridge Plug

Length: 0.33 m Max Diameter: 101.60 mm



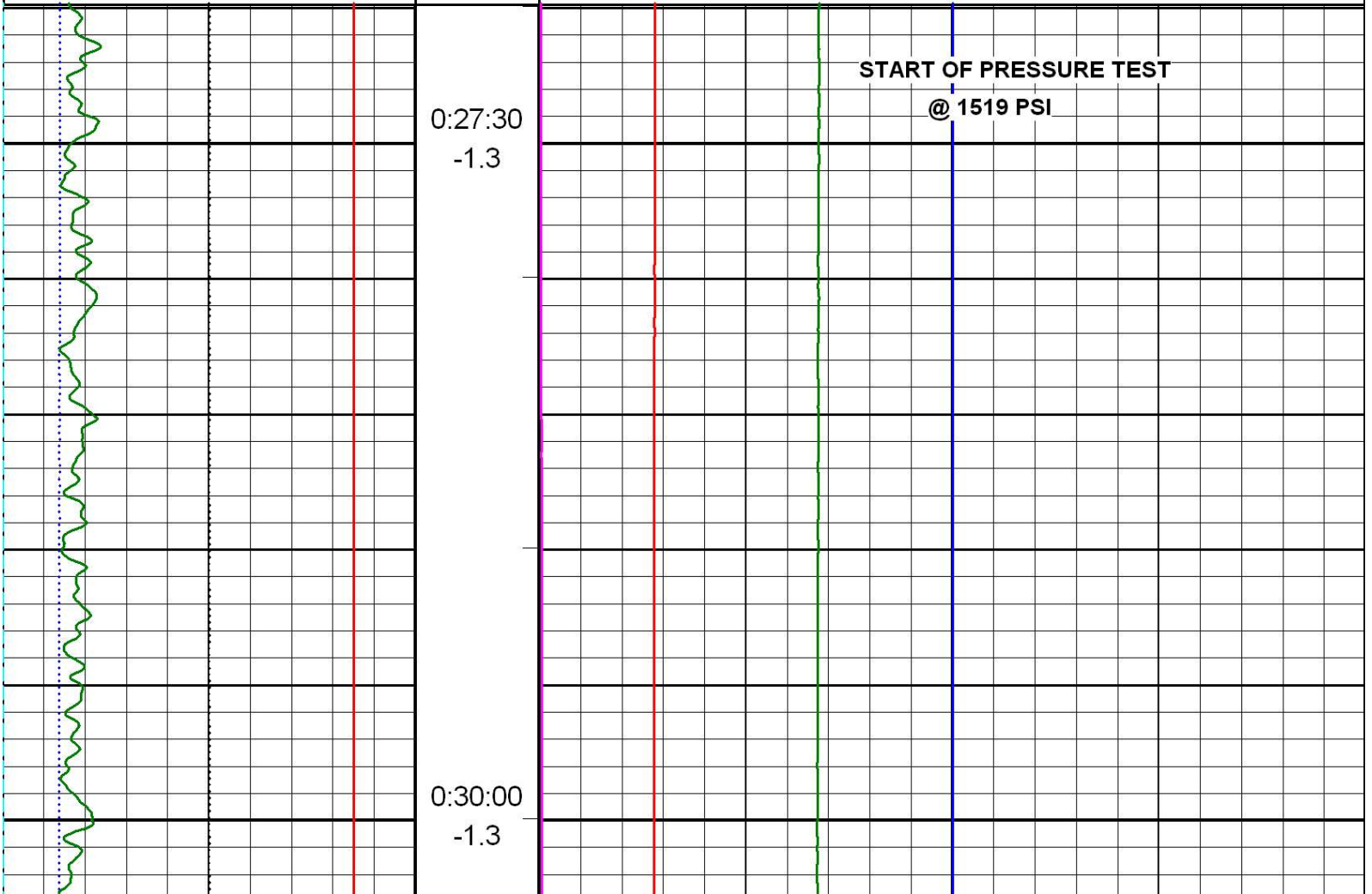
7.95 m - Center Element

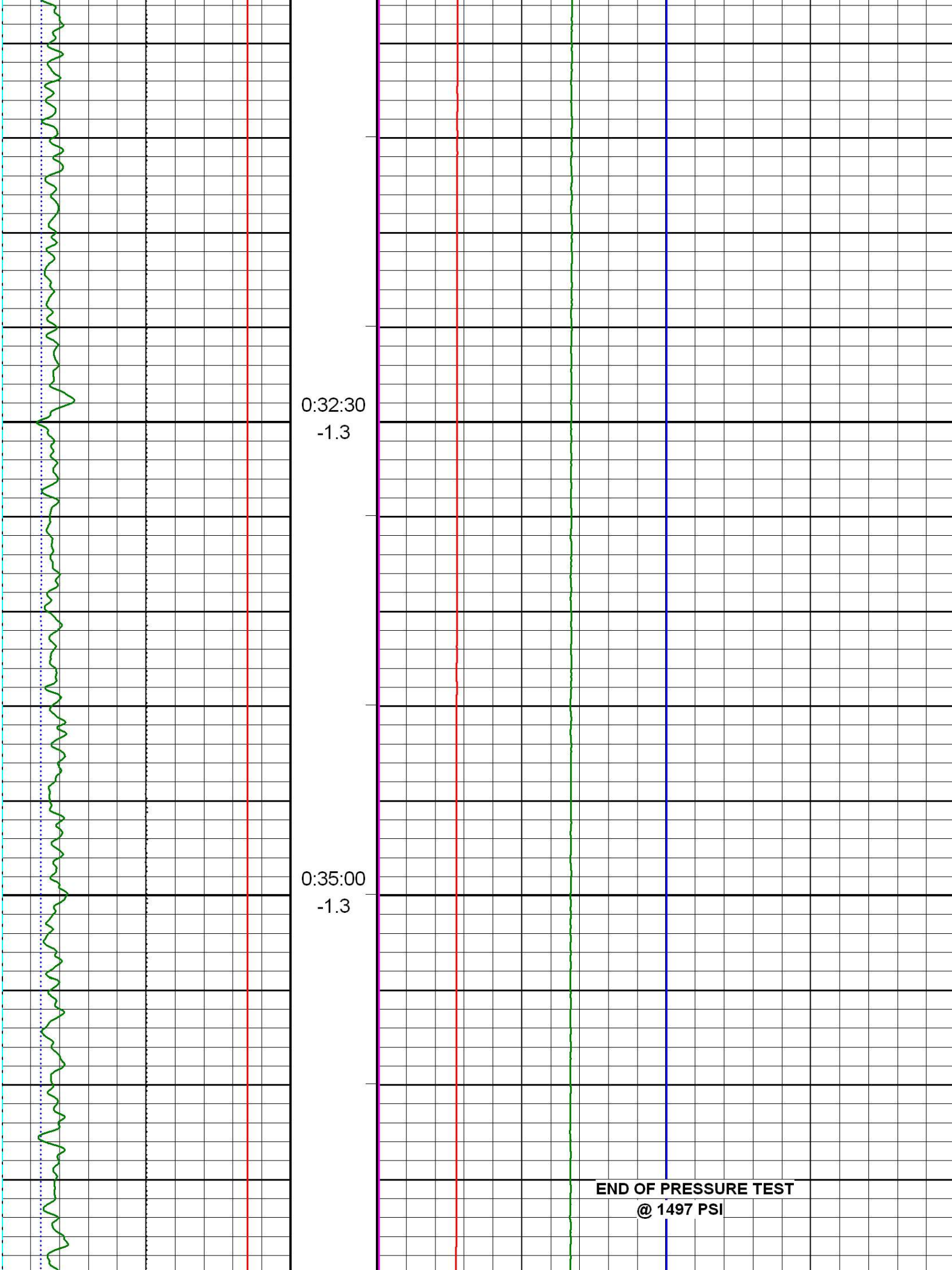
8.12 m Bottom of String

Pressure Test

2020-05-19 13:55 Tension (lbF)	METERS 1:240	Temperature (°C)
0.00 3500.00		0.00 40.00
Speed (m/min)		Wellbore Pressure
0.00 100.00		-5.00 4500.00
CCL		Dielectric CH-6 (Hz)
0.00 100.00		-3000.00 3000.00
Gamma Ray	KWAT Test Pressure (Hz)	-5 4500
0.00 150.00	Time Drive 10.00m/min	File Pressure Test REV.pre
Diff Temperature (°C/m)	Shutin	
-2.00 2.00		
Pass No. 3		

Rev. 2018.08.22

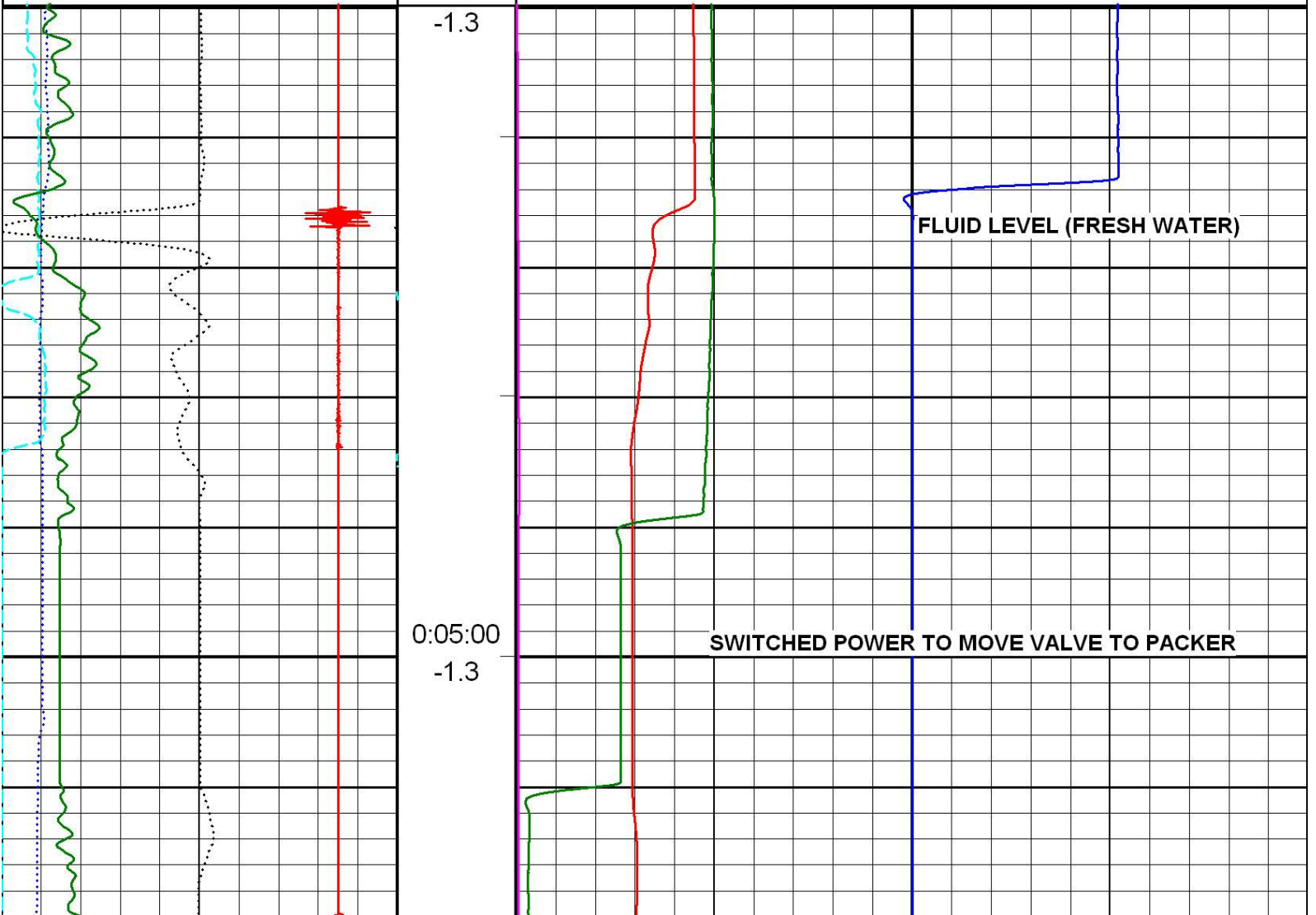


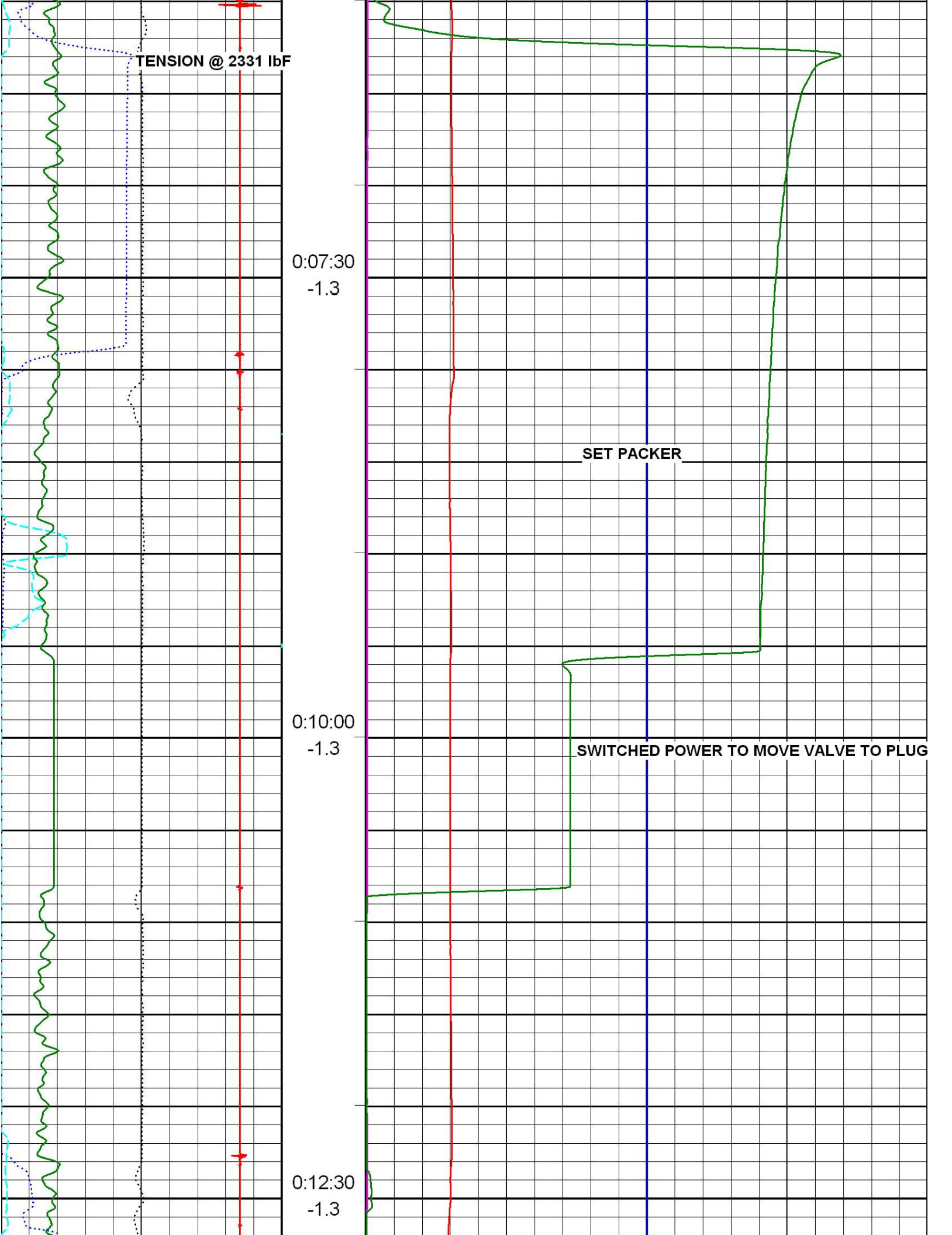


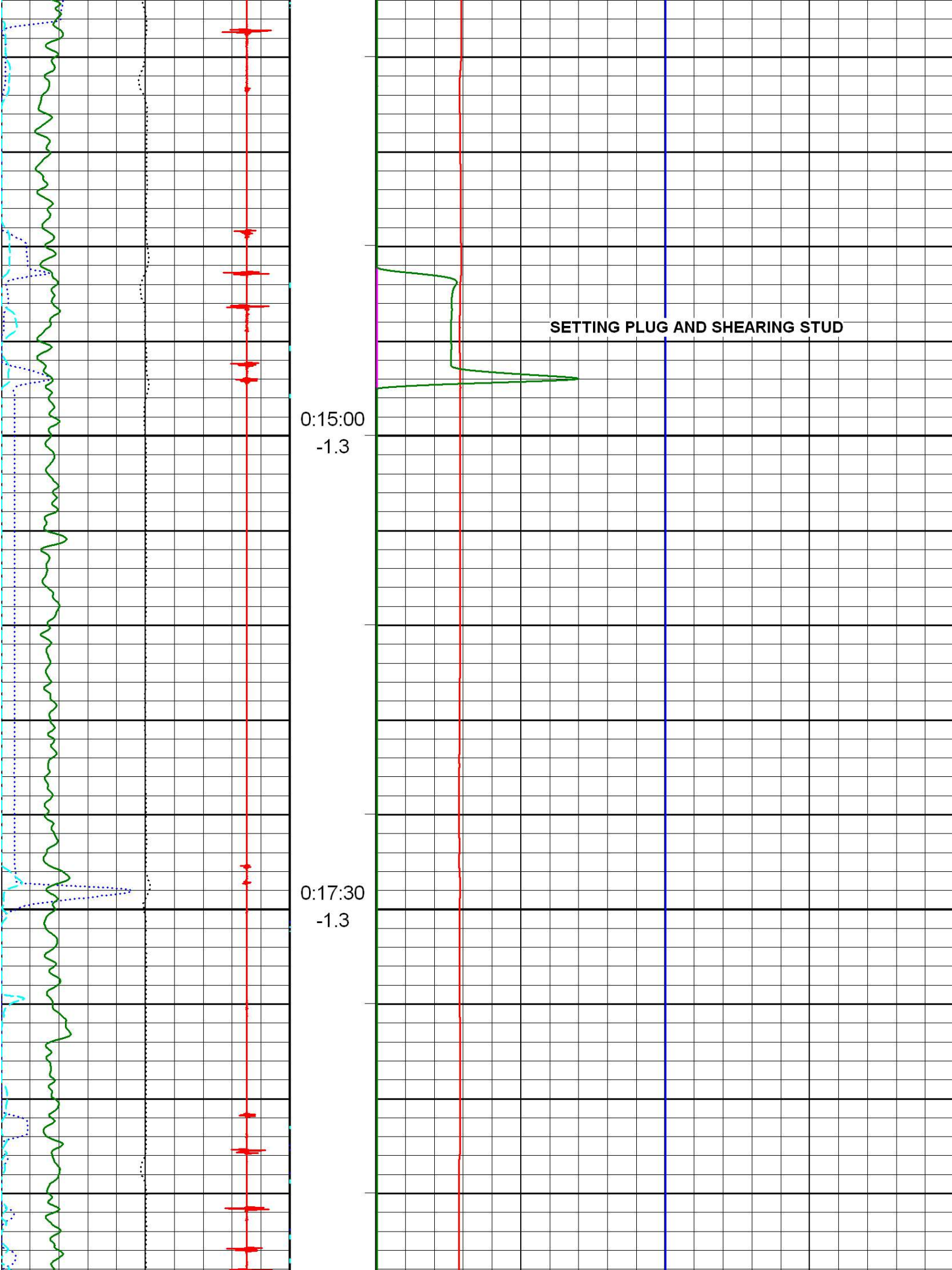
2020-05-19 13:55		Temperature (°C)	40.00
Tension (lbF)	3500.00	Wellbore Pressure	4500.00
0.00		Dielectric CH-6 (Hz)	3000.00
Speed (m/min)	100.00	KWAT Test Pressure (Hz)	4500
0.00		-5	
CCL	100.00	Time Drive 10.00m/min	File Pressure Test REV.pre
0.00		Shutin	
Gamma Ray	150.00		
0.00			
Diff Temperature (°C/m)	2.00		
-2.00			
Pass No. 3	METERS 1:240		Rev. 2018.08.22

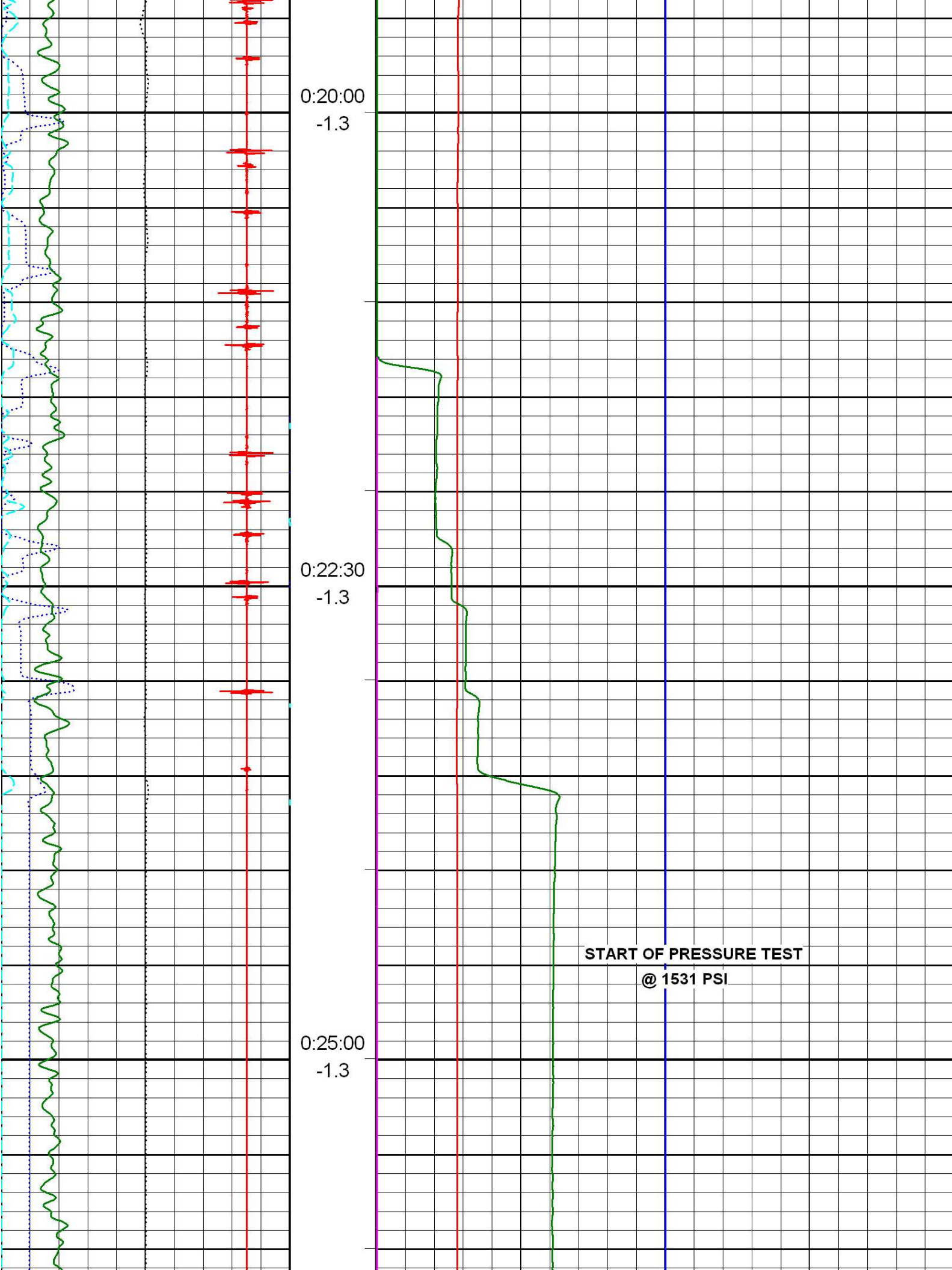
Packer and Plug Test

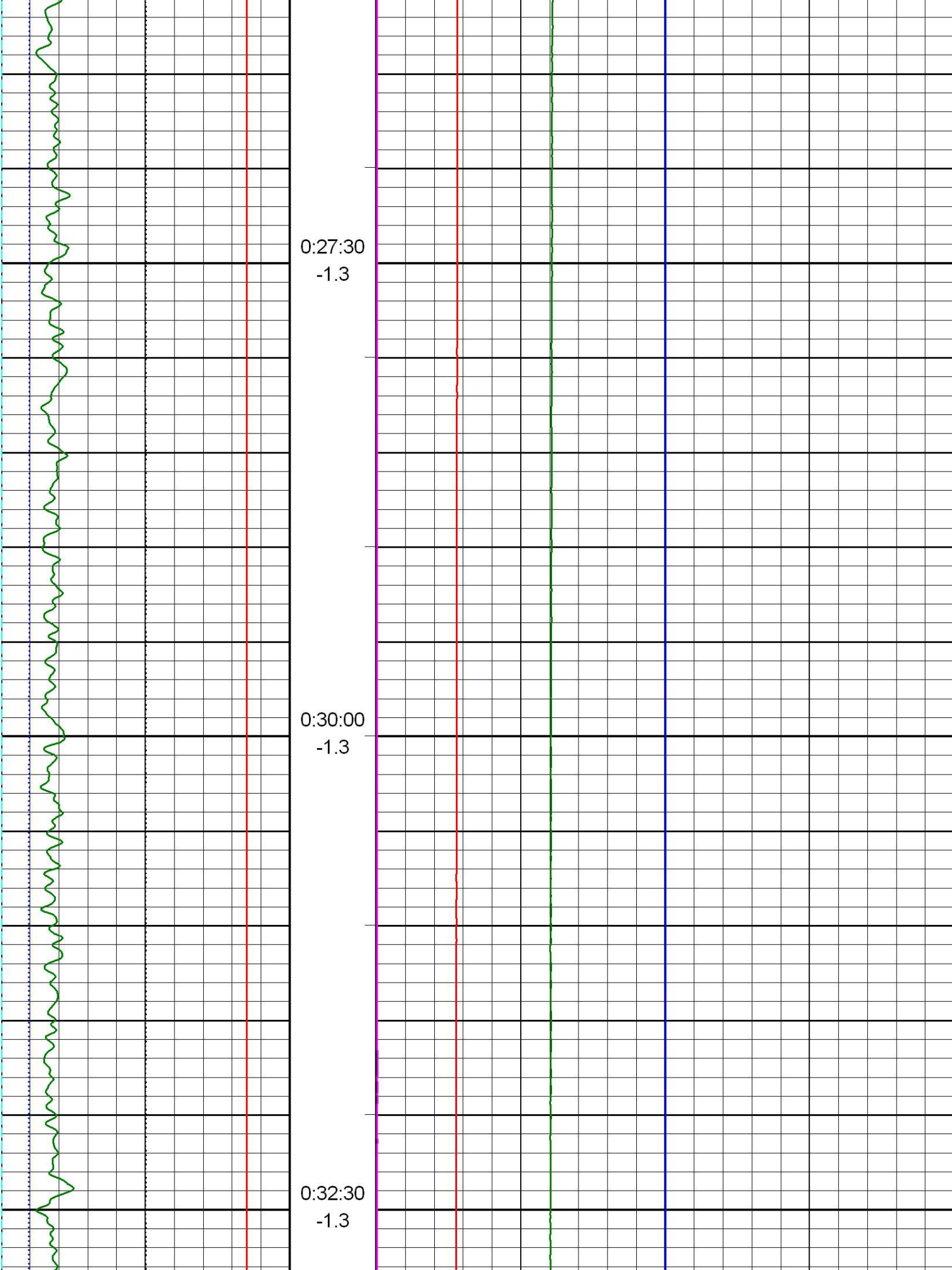
2020-05-19 13:55		Temperature (°C)	40.00
Tension (lbF)	5000.00	Wellbore Pressure	5000.00
0.00		Dielectric CH-6 (Hz)	3000.00
Speed (m/min)	100.00	KWAT Test Pressure (Hz)	5000
0.00		0	
CCL	100.00	Time Drive 10.00m/min	File MAIN TEST REV.pre
0.00		Shutin	
Gamma Ray	150.00		
0.00			
Diff Temperature (°C/m)	2.00		
-2.00			
Pass No. 3	METERS 1:240		Rev. 2018.08.22

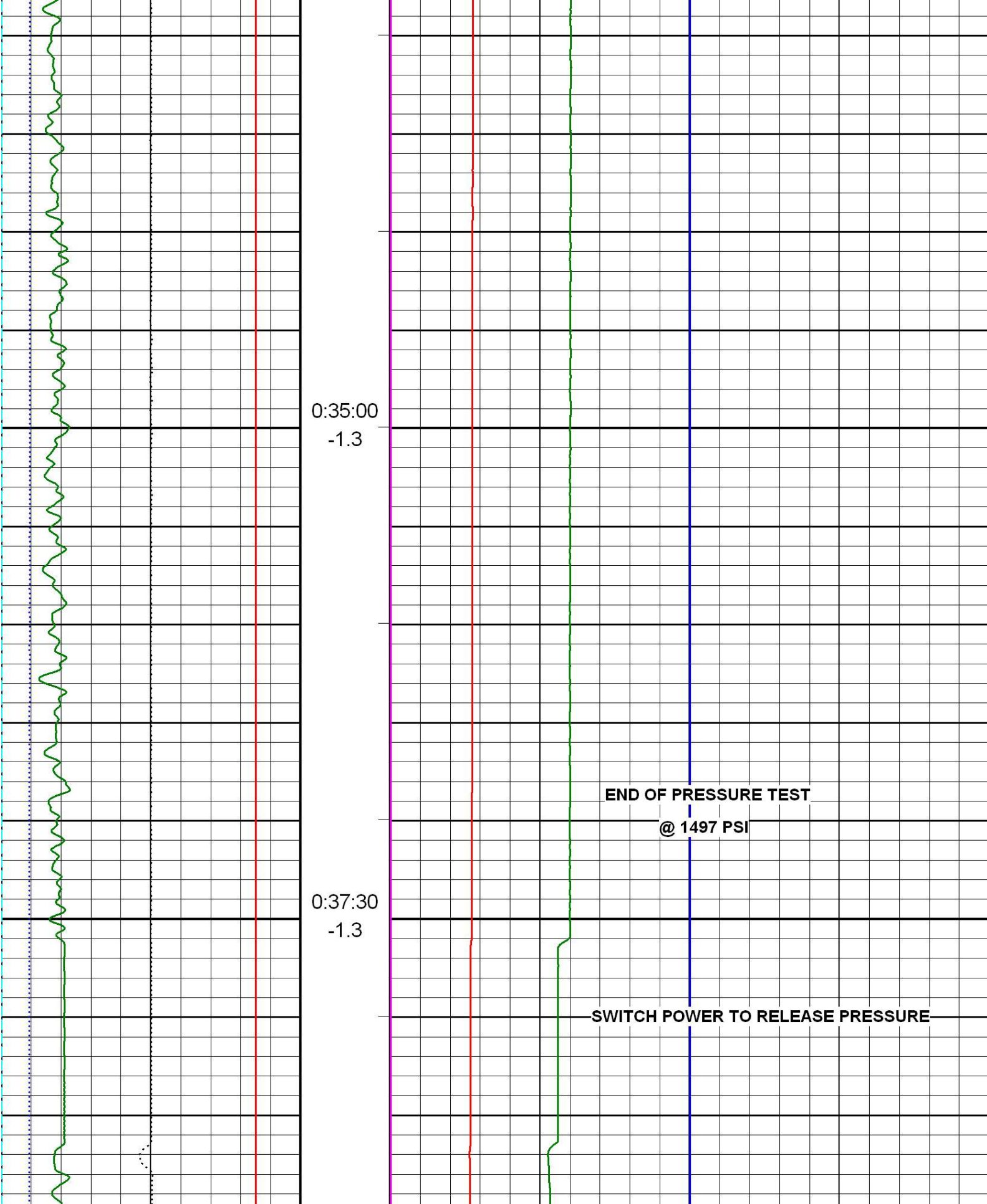












2020-05-19 13:55
Tension (lbF)
0.00 5000.00
Speed (m/min)
0.00 100.00

Temperature (°C)
0.00 40.00
Wellbore Pressure
0.00 5000.00
Dielectric CH-6 (Hz)
0.00 5000.00

CCL	
0.00	100.00
Gamma Ray	
0.00	150.00
Diff Temperature (°C/m)	
-2.00	2.00
Pass No. 3	

0:40:00

METERS
1:240

-3000.00	KWAT Test Pressure (Hz)	3000.00
0		5000
Time Drive 10.00m/min Shutin	File MAIN TEST REV.pre	
		Rev. 2018.08.22



Company RELIANCE OILFIELD SERVICES

Well SHAFT 07-24

Field CYGNET

Province ALBERTA

Country CANADA

LSD. 07

SEC. 24

TWP. 038

RGE. 28

W. 4